



# **SGA Elections Info Session**

# Meet your Elections Board!

**Carlos Ricotti**

Elections Commissioner

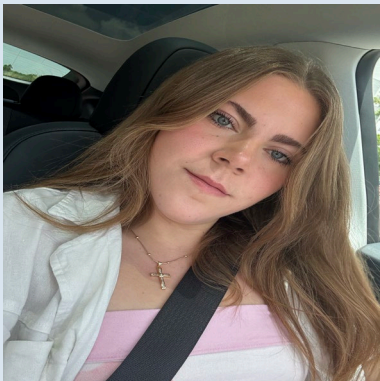


**Sebastion Herrera**

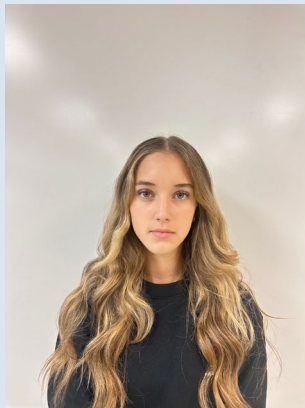
Deputy elections  
commissioner



**Chantal Elias  
Moises**



**Yanisel Capote**



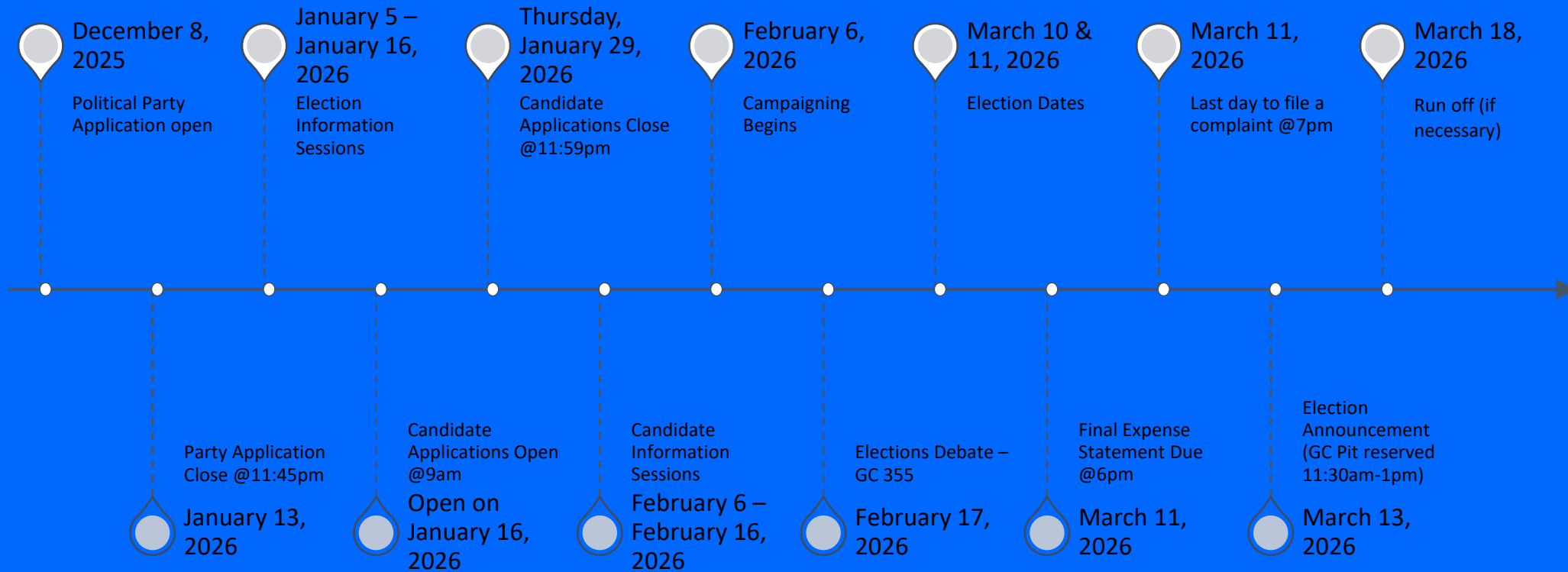
**Luciana  
Carmona**



# Understanding the Elections Board

- If you have any questions regarding elections it can be directed to us at [elections@fiu.edu](mailto:elections@fiu.edu)
- We oversee elections and are responsible for the execution of the elections code
- Approving candidates and parties
- Hold Campaign Violation hearings if necessary
- Vote on any decisions regarding elections

# Timeline



# Seats you can run for!

## Executive

- President
- Vice president
- BBC Governor
- BBC Lt. Governor

## Student Body Senate- Academic College Seats

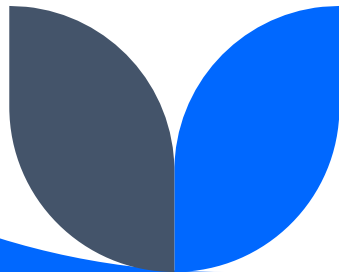
- CASE Senator (11)
- College of business Senator ( 6)
- CARTA Senator (3)
- College of Engineering & Computing Senator (6)
- SIPA senator (3 )
- Hospitality & Tourism Management Senator (1)
- Nursing & Health Sciences Senator (1)
- Public Health & Social Work Senator (1)
- Honors college senator (1)
- College of Law Senator (1)

## Student Body Senate – Classifications and special Representation

- Lower Division Senator (2)
- Upper Division Senator (2)
- Graduate Senator (5)

## Student Body Senate – Campus and Housing Representation

- MMC housing senator (4)
- BBC housing senator (1)
- Biscayne Bay Campus at Large (5)
- FIU at I-75 Senator (1)



# Candidate Application Process

## How to become an official Candidate

- Submit candidate application **on time**
- Meet all eligibility requirements
- Attend a **mandatory candidate information session**
- Acknowledge the Elections Code

 Missing ANY step = **disqualification**



# Campainging Rules

## Campaigning DOs & DON'Ts

### ✓ Allowed:

- Campaign ONLY after Feb 6
- Social media, flyers, events (within rules)

### ✗ NOT Allowed:

- Campaigning before Feb 6
- Using SGA resources
- Harassing or intimidating others
- Misrepresenting rules or endorsements



# Campaign Finance

## Campaign Finance Rules

- ALL expenses must be reported
- Spending limits apply
- Friends paying for things still counts as YOUR expense
- Receipts are required



**Final Expense Report**

**Due:**

**March 11 @ 6:00 PM**



## WHAT COUNTS AS A CAMPAIGN EXPENSE

- Flyers, posters, stickers
- Clothing or merch with campaign messaging
- Food or supplies for campaign events
- Social media ads or promotions
- Any materials used to promote your candidacy



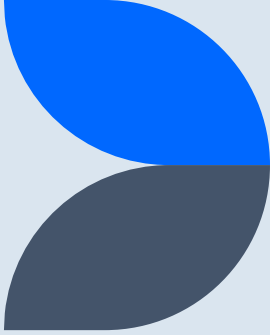
**If it promotes you, it counts.**

## REPORTING REQUIREMENTS

- ALL expenses must be reported
- You must keep receipts or proof of payment
- If someone else pays for something, it is **still YOUR expense**
- Expenses must be disclosed honestly and completely
- **✗ NOT ALLOWED**
  - Exceeding spending limits
  - Hiding or misreporting expenses
  - Using SGA funds or resources
  - Accepting prohibited contributions
  - “Forgetting” to report expenses



# Political Party Requirements



## What is a political Party:

A political party is a **group of candidates** that choose to campaign together under a shared name and platform during SGA elections.

### ✅ REQUIREMENTS TO FORM A POLITICAL PARTY

To be officially recognized, a party must:

- **Apply during the official party application period**
- Have a **Party Chair**
- Have a **Party Treasurer**
- Have **at least one officially qualified candidate**
- Be **approved by the Elections Board**

🚨 Parties that are not approved **may not campaign as a party**

### PARTY RESPONSIBILITIES

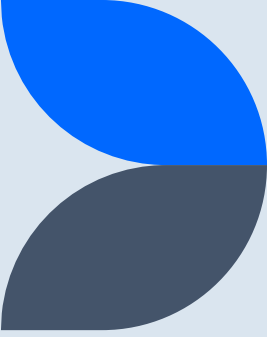
Political parties must:

- Follow **all campaign and finance rules**
- Accurately report **party-related expenses**
- Ensure all members comply with the Elections Code
- Cooperate with Elections Board requests or investigations

### ❌ NOT ALLOWED

- Campaigning before approval
- Coordinating outside of approved party rules
- Continuing to campaign after elections end
- Using organizations, SGA resources, or outside funding improperly
- Acting as a party without Elections Board recognition

# Debates and Voting



## What Are the Debates?

- Official, Elections Board–hosted events
- Designed to give **equal opportunity** to candidates
- Moderated and structured to ensure fairness

## Who Participates?

- Candidates running for **executive positions**
- Senate candidates **if applicable** (based on Elections Board determination)
- Participation rules are announced **in advance**

## How the Debate Works

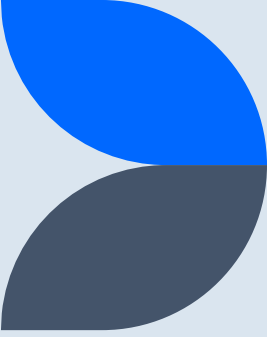
- Candidates receive **equal speaking time**
- Questions are:
  - Moderated
  - Pre-selected and/or audience-submitted
- No interruptions or personal attacks
- Time limits are **strictly enforced**

## ✖ Debate Rules

- No campaigning during the debate
- No props, signs, or campaign materials
- No attacking other candidates personally
- Must follow moderator instructions at all times

## ⚠ Debate violations are campaign violations

# Debates and Voting Part 2



## When Does Voting Happen?

March 10 & 11, 2026

## How Students Vote

- Voting is conducted **electronically**
- Students vote through the **official FIU voting platform**
- Ballots are **seat-specific**
  - Not everyone votes for every position

## What Candidates **CANNOT** Do

- ✗ Influence voters while they are voting
- ✗ Stand near voting areas (physical or virtual)
- ✗ Offer incentives or rewards
- ✗ Spread misinformation about voting
- ✗ Monitor or track who voted

## HOW RESULTS WORK

- Votes are securely tabulated
- Results are reviewed and certified by the Elections Board
- Winners are announced **after certification**
- Run-off elections occur **only if required**

# Violations and Penalties

## ✗ COMMON ELECTION VIOLATIONS

Candidates **may NOT**:

### Campaigning Violations

- Campaign before the official start date
- Coordinate improperly with organizations or parties
- Allow others to campaign on your behalf outside the rules

### Finance Violations

- Exceed spending limits
- Fail to report expenses
- Misreport or hide expenses
- Miss the final expense report deadline

### Conduct Violations

- Harass, intimidate, or threaten others
- Spread false or misleading information
- Misrepresent endorsements or election rules
- Disrespect debate or voting procedures

### Voting Violations

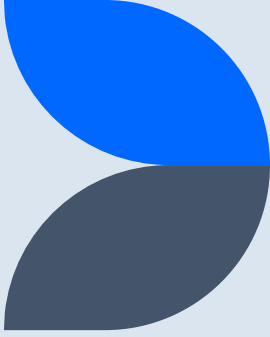
- Interfere with voters
- Pressure students to vote a certain way
- Offer incentives for votes
- Monitor or attempt to track votes

## POSSIBLE PENALTIES

Depending on severity and frequency, penalties may include:


- Written warning
- Monetary fines
- Campaign restrictions
- Loss of campaign privileges
- **Disqualification from the election**
- Referral to the **SGA Supreme Court**

# Complaints, Investigations & Appeals



- Anyone Can file a complaint

## •HOW TO FILE A COMPLAINT

- A valid complaint must:
- Be **submitted in writing**
- Be **filed by the official deadline**
- Include **specific details**:
  - Who was involved
  - What rule was violated
  - When and where it happened
  - Any supporting evidence (screenshots, messages, etc.)
  -  Social media posts, rumors, or verbal complaints **do not count**

•**DEADLINE: last day to file a complaint is march 11, 2026 7pm**

## WHAT HAPPENS AFTER A COMPLAINT IS FILED

- Elections Board reviews the complaint
- Evidence is evaluated
- Parties involved may be contacted
- A ruling is issued or a hearing is held if necessary
- Penalties (if any) are assigned

## APPEALS

- Certain decisions may be appealed
- Appeals follow formal procedures
- Final authority rests with the **SGA Supreme Court**

# Results and Run Offs

## Results

- Announced **March 13 @ Noon**
- Run-off election if needed: **March 18**

## Where to Apply & Contact Info

- Apply: **voting.fiu.edu**
- Info: **go.fiu.edu/sgaelections**
- Email: [elections@fiu.edu](mailto:elections@fiu.edu)

# Qualifications for all elected positions (constitution)

---

## Qualifications for all Student Government Officials

- Be a degree-seeking, registered student.
- Run for and hold only one office at a time.
- Be under no academic or disciplinary sanctions as detailed in the Student Conduct and Honor Code or individual University College.
- Maintain no less than a 2.5 cumulative grade point average (GPA) and a 2.0 semesterly grade point average (GPA) where applicable.
- Students that do not have a grade point average (GPA), on account of being in their first semester of their undergraduate or graduate degree program at FIU, shall be exempt from the GPA qualifications for only that semester.
- Each undergraduate student holding office shall maintain a minimum of nine (9) undergraduate credit hours each Fall and Spring semester; in their last semester before graduation, they shall be exempt from this requirement but must maintain a minimum of three (3) credit hours.
- Each graduate student holding office shall maintain a minimum of six (6) graduate credit hours, or a minimum of three (3) dissertation credit hours while working on their dissertation, for each Fall and Spring semester; in their last semester before graduation, they shall be exempt from this requirement but must maintain a minimum of three (3) credit hours.

# Qualifications for Legislative Branch Officials

---

- Each Senator shall be registered to the specific school, college, campus, class level, or housing units that they represent.
- Lower Division Senators must have passed less than 60 credits at the time of election qualification or appointment. Should they pass 60 credits after their election qualification or appointment, this will not disqualify them from remaining in their position.
- Upper Division Senators must have passed at least 60 credits at the time of election qualification or appointment.



# Qualifications for Executive Branch Officials

---

- Candidates for the offices of Student Body President and Vice President must meet the following qualifications by the date they register to run: they shall have attended FIU for a minimum of four complete academic semesters, which may include summer semesters; and they shall have achieved at least sophomore standing.
- Candidates for the office of Student Body President shall have held at least one SGA position for at least one hundred and twenty (120) consecutive days by the first day of registration for general elections, except in the case the President succeeds to office.
- The Governor of the Biscayne Bay Campus and the Lieutenant Governor of the Biscayne Bay Campus must be students belonging to the Biscayne Bay Campus as per this Constitution

# Qualifications for Representing the Biscayne Bay Campus

---

- All students representing the Biscayne Bay Campus in an elected or appointed position (BBC At-Large Senators, the Governor of the Biscayne Bay Campus, the Lieutenant Governor of the Biscayne Bay Campus, and the members of the Governor's Cabinet) are required to be a student belonging to the Biscayne Bay Campus.
- A student of the Biscayne Bay Campus is defined as: a student who is living on-campus at the Biscayne Bay Campus, or who is taking at least twenty percent (20%) of their classes at the Biscayne Bay Campus.
- For purposes of representation, the FIU Engineering Center shall be designated to be part of the Modesto A. Maidique Campus, and FIU at I-75 shall be designated to be part of the Biscayne Bay Campus.
- Classes in the following programs, regardless of modality, shall be considered classes at the Biscayne Bay Campus: Hospitality Management Program, Marine Sciences Program, Journalism + Media Program, Marketing, Health Services Administration, Accelerated BSN (Nursing), Creative Writing, Broadcast Media, Global Strategic Communications, Mass Communications, and any program offered by the Chaplin School of Hospitality and Tourism Management.
- The above list of programs shall be provided by the administration of the Biscayne Bay Campus and updated in this Constitution as needed, with the approval of the Supreme Court, to reflect the most accurate course and program offerings at the campus.

# Qualifications for Representing FIU at I-75

---

- All students representing FIU at I-75 in the Senate shall be a student of FIU at I-75.
- A student of FIU at I-75 is defined as a student taking at least one class at FIU at I-75.